

Supply Risers: Faucet

A



Formed Metal
Nosepiece w/Insert
Suffix "A"
Example: 1-12A C

C



Rubber Washer
w/Brass Friction Ring
Suffix "C"
Example: F1-11C C

CS



Reinforced, Formed
Nosepiece,
One-Piece Construction
Prefix "CS"
Example: CS600 R
See Fig. 1

KC



Compression Nut
and Sleeve
Suffix "KC"
Example: 1-12KC C
See Fig. 2

K



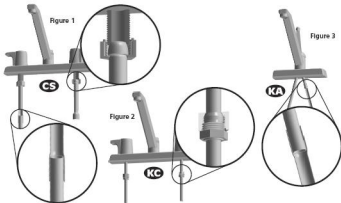
1/2" M.J.P. Tapped
1/4" F.I.P.
Suffix "K"
Example: 1-12K C

KA



Sweat
Suffix "KA"
Example: 1-12KA C
See Fig. 3

- Pre-assembled with brass coupling nut for metal-to-metal seat
- Eliminates faucet tailpieces and I.P. x sweat adapters
- Direct connection from faucet to service line
- Deep well, 1Q" Nom. copper solder cup
- For in-line shut-off, use with compression valve



Supply Risers: Toilet

AE



Formed Nosepiece
w/Flange & Rubber
Washer
Suffix "AE"
Example: 1-120AE C

DL



Formed Nosepiece
w/Insert Gasket
Suffix "DL"
Example: 1-12DL C

DE



Heavy Nosepiece
w/Rubber Washer
Suffix "DE"
Example: 1-12DE C

E



Rubber Washer
w/Brass Friction Ring
Suffix "E"
Example: F1-11E C

BOXED RISERS

† - Denotes riser is available boxed. Contact your local rep.