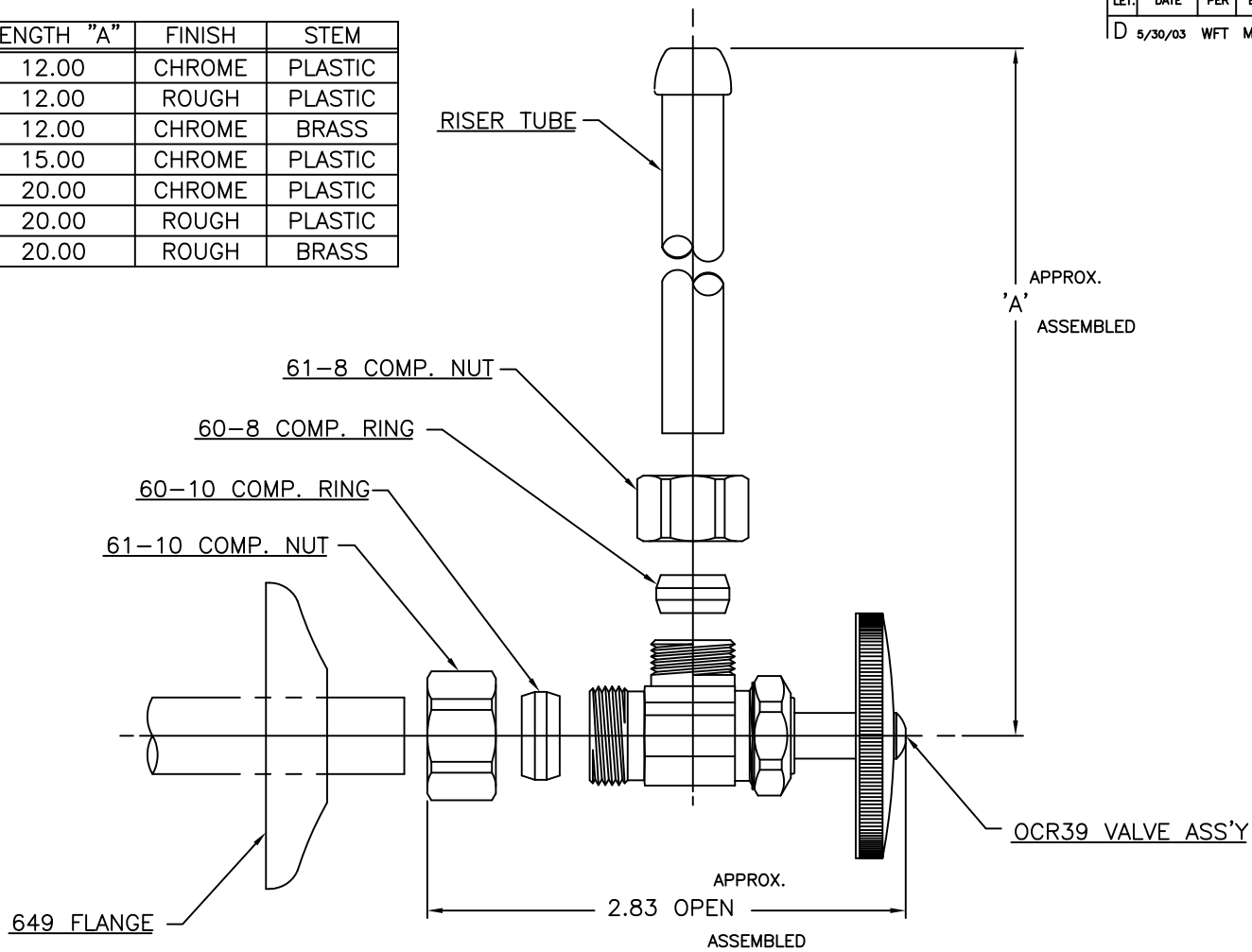


ITEM I.D.	ITEM DESC.	LENGTH "A"	FINISH	STEM
OCR3912A C	OCR3912A	12.00	CHROME	PLASTIC
OCR3912A R	OCR3912A	12.00	ROUGH	PLASTIC
OCR3912AZ C	OCR3912A	12.00	CHROME	BRASS
OCR3915A C	OCR3915A	15.00	CHROME	PLASTIC
OCR3920A C	OCR3920A	20.00	CHROME	PLASTIC
OCR3920A R	OCR3920A	20.00	ROUGH	PLASTIC
OCR3920AZ R	OCR3920A	20.00	ROUGH	BRASS

LET.	DATE	PER	BY	CHANGE
D	5/30/03	WFT	MJP	REVISED & UPDATED



DESCRIPTION  
1/2 NOM COMP X 1/2 OD COMP  
VALVE W/RISER (SUBMITTAL)

DRAWING NO.  
VPA0494D

DRAWN DATE:  
PERNAK 3/14/2003

MATERIAL

ITEM DESCRIPTION  
OCR3912A  
SEE CHART

CHK'D DATE:  
Klimkie 05/30/2003

VOLUME

ITEM ID  
OCR3912A C  
SEE CHART

APP'D. DATE:

NOTE: UNLESS OTHERWISE SPECIFIED  
TWO PLACE DECIMALS +/- .010  
THREE PLACE DECIMALS +/- .005  
ANGULARITY +/- 1°

B  
SIZE

UNITS  
INCH

SCALE:  
(UNLESS NOTED)  
FULL

REV.  
D

This drawing and all data contained herein is the confidential and exclusive property of BrassCraft Manufacturing, and shall not be disclosed to others without the written consent of BrassCraft. This drawing must be returned to BrassCraft if requested.

ALL GDT PER ANSI STD Y14.5M  
CLASSIFICATION OF QUALITY LEVELS

CLASS SYMBOL  
KPC (KEY PRODUCT CHARACTERISTICS)   
STPC (STANDARD PRODUCT CHARACTERISTICS)   
PRODUCT MARKINGS