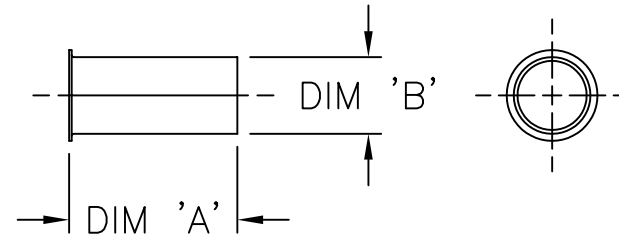






LET.	DATE	PER	BY	CHANGE
A	03/28/08	ROL	JPS	RELEASE

ITEM I.D. (BRASS)	TUBE SIZE	DIM 'A'	DIM 'B'
63PT-4 B	1/4	.75	.164
63PT-5 B	5/16	.59	.215
63PT-6 B	3/8	.56	.250
63PT-8 B	1/2	.72	.372
63PT-10 B	5/8	.72	.483



 BrassCraft [®] A Masco Company NOVI, MICHIGAN	DESCRIPTION		DRAWING NO.		
	PLASTIC TUBE INSERT (SUBMITTAL)		VPG0792A		
	DRAWN	DATE:	MATERIAL	ITEM DESCRIPTION	
	SCHUTTE	03/28/08	BRASS	63PT-8	
CHK'D.	DATE:	VOLUME	ITEM ID		
Learmont	03/28/2008		63PT-8 B		
APP'D.	DATE:	NOTE: UNLESS OTHERWISE SPECIFIED TWO PLACE DECIMALS +/- .010 THREE PLACE DECIMALS +/- .005 ANGULARITY +/- 1°	UNITS	SCALE: (UNLESS NOTED)	REV.
			 SIZE	INCH	FULL

This drawing and all data contained herein is the confidential and exclusive property of BrassCraft Manufacturing, and shall not be disclosed to others without the written consent of BrassCraft. This drawing must be returned to BrassCraft if requested.

CLASS	SYMBOL
KPC (KEY PRODUCT CHARACTERISTICS)	
STPC (STANDARD PRODUCT CHARACTERISTICS)	
PRODUCT MARKINGS	