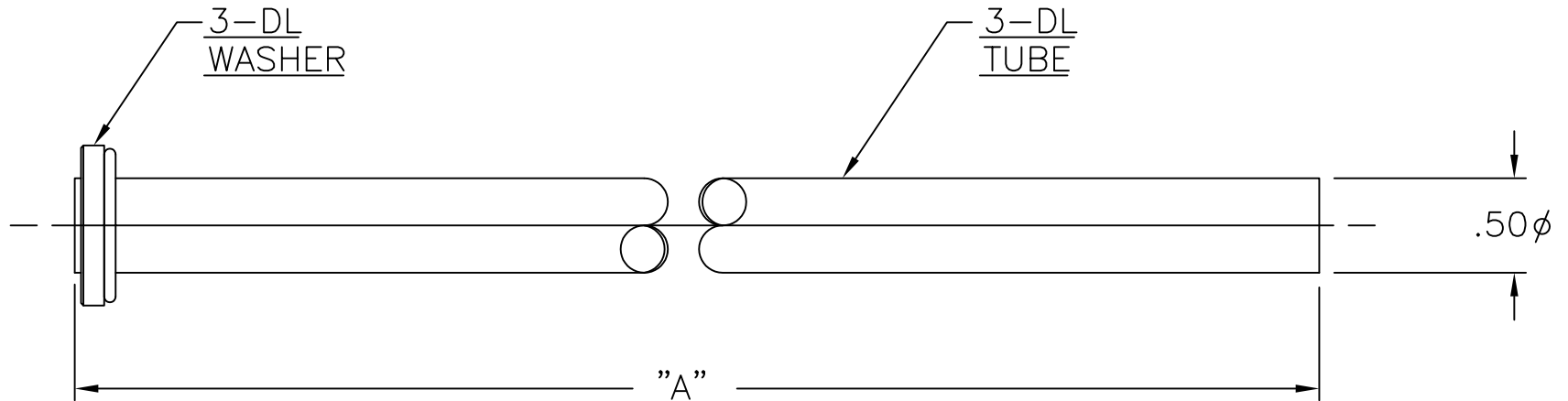


LET.	DATE	PER	BY	CHANGE
A	12/21/06	JPS	KAK	RELEASE



ITEM I.D.	ITEM DESC.	DIMENSION "A"
3-12DL C	3-12DL	11.56
3-20DL C	3-20DL	19.56

 BrassCraft [®] A Masco Company NOVI, MICHIGAN ALL GDT PER ANSI STD Y14.5M CLASSIFICATION OF QUALITY LEVELS	DESCRIPTION		DRAWING NO.		
	1/2 OD TOILET RISER W/GASKET NOSEPIECE (SUBMITTAL)		RPG0098A		
	DRAWN	DATE:	MATERIAL	ITEM DESCRIPTION	
	KLIMKIE	12/21/2006		3-12DL SEE CHART	
CHK'D.	DATE:	VOLUME	ITEM ID		
Schutte	12/21/2006		3-12DL C SEE CHART		
APP'D.	DATE:	NOTE: UNLESS OTHERWISE SPECIFIED	UNITS	SCALE: (UNLESS NOTED)	REV.
		TWO PLACE DECIMALS +/- .010	INCH	FULL	A
KPC (KEY PRODUCT CHARACTERISTICS) ◆		THREE PLACE DECIMALS +/- .005			
STPC (STANDARD PRODUCT CHARACTERISTICS) ▲		ANGULARITY +/- 1°			
PRODUCT MARKINGS ○		SIZE			

This drawing and all data contained herein is the confidential and exclusive property of BrassCraft Manufacturing, and shall not be disclosed to others without the written consent of BrassCraft. This drawing must be returned to BrassCraft if requested.