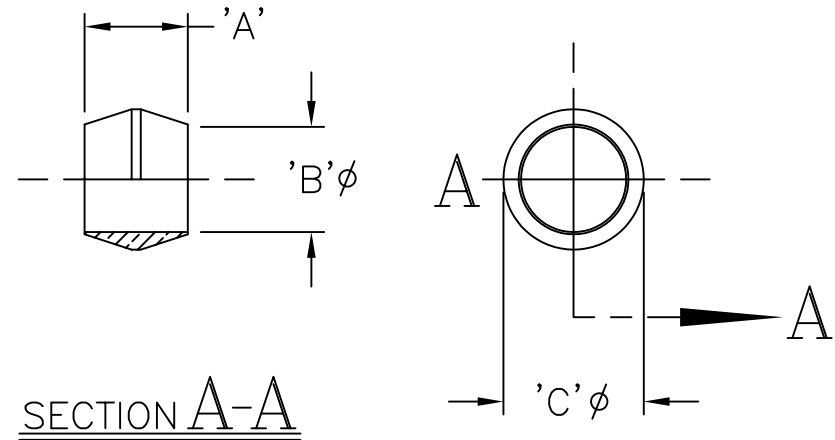


LET.	DATE	PER	BY	CHANGE
B	1/21/05	KAK	MJP	REVISED & UPDATED

ITEM I.D. (BRASS)	TUBE SIZE	DIM 'A'	DIM 'B'	DIM 'C'
60-2 B	1/8	.19	.130	.188
60-3 B	3/16	.22	.192	.266
60-4 B	1/4	.25	.255	.340
60-5 B	5/16	.25	.318	.406
60-6 B	3/8	.25	.382	.468
60-7 B	7/16	.31	.444	.531
60-8 B	1/2	.31	.507	.597
60-10 B	5/8	.31	.632	.718
60-12 B	3/4	.44	.758	.875
60-14 B	7/8	.34	.893	1.000



This drawing and all data contained herein is the confidential and exclusive property of BrassCraft Manufacturing, and shall not be disclosed to others without the written consent of BrassCraft. This drawing must be returned to BrassCraft if requested.



NOVI, MICHIGAN	
ALL GDT PER ANSI STD Y14.5M CLASSIFICATION OF QUALITY LEVELS	
CLASS	SYMBOL
KPC (KEY PRODUCT CHARACTERISTICS)	◇
STPC (STANDARD PRODUCT CHARACTERISTICS)	△
PRODUCT MARKINGS	○

DESCRIPTION COMPRESSION SLEEVES (SUBMITTAL)		DRAWING NO. CFR0228B			
DRAWN PERNAK	DATE: 12/01/2004	MATERIAL	ITEM DESCRIPTION 60-2		
CHK'D. Klimkie	DATE: 01/25/2005		VOLUME	ITEM ID 60-2 B SEE CHART	
APP'D.	DATE:	NOTE: UNLESS OTHERWISE SPECIFIED TWO PLACE DECIMALS +/- .010 THREE PLACE DECIMALS +/- .005 ANGULARITY +/- 1°		UNITS INCH	SCALE: (UNLESS NOTED) 2:1