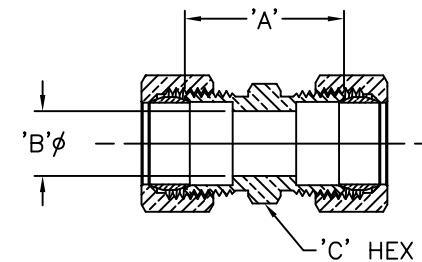
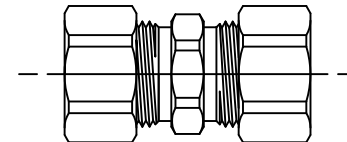


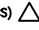



LET.	DATE	PER	BY	CHANGE
C	06/18/07	ROL	KAK	REVISED & UPDATED

ITEM I.D. (BRASS)	ITEM I.D. (CHROME)	TUBE SIZE		STRAIGHT THREAD		DIM 'A'	DIM 'B'	'C' HEX
		1	2	1	2			
62-2 B	-	1/8	1/8	5/16-24	5/16-24	.64	.094	5/16
62-3 B	-	3/16	3/16	3/8-24	3/8-24	.75	.125	3/8
62-4-2 B	-	1/4	1/8	7/16-24	5/16-24	.81	.189	7/16
62-4-3 B	-	1/4	3/16	7/16-24	3/8-24	.91	.094	9/16
62-4 B	-	1/4	1/4	7/16-24	7/16-24	.78	.125	7/16
62-5-4 B	-	5/16	1/4	1/2-24	1/2-24	.84	.189	1/2
62-5 B	-	5/16	5/16	1/2-24	1/2-24	.87	.252	1/2
62-6-4 B	-	3/8	1/4	9/16-24	7/16-24	.91	.188	9/16
62-6-5 B	-	3/8	5/16	9/16-24	1/2-24	.92	.250	9/16
62-6 B	62-6 C	3/8	3/8	9/16-24	9/16-24	.96	.314	9/16
62-7 B	-	7/16	7/16	5/8-24	5/8-24	1.02	.312	5/8
62-8-6 B	62-8-6 C	1/2	3/8	11/16-20	9/16-20	1.03	.314	11/16
62-8 B	62-8 C	1/2	1/2	11/16-20	11/16-24	1.09	.408	11/16
62-10-6 B	62-10-6 C	5/8	3/8	13/16-18	9/16-24	1.12	.314	13/16
62-10-8 B	62-10-8 C	5/8	1/2	13/16-18	11/16-20	1.18	.406	13/16
62-10 B	62-10 C	5/8	5/8	13/16-18	13/16-18	1.25	.531	13/16
62-12 B	-	3/4	3/4	1-18	1-18	1.40	.562	1
62-14 B	-	7/8	7/8	1-1/8-18	1-1/8-18	1.14	.750	1-1/8



This drawing and all data contained herein is the confidential and exclusive property of BrassCraft Manufacturing, and shall not be disclosed to others without the written consent of BrassCraft. This drawing must be returned to BrassCraft if requested.

 A Masco Company NOVI, MICHIGAN ALL GDT PER ANSI STD Y14.5M CLASSIFICATION OF QUALITY LEVELS		DESCRIPTION		DRAWING NO.		
		COMPRESSION X COMPRESSION STRAIGHT UNION (SUBMITTAL)		CFU0227C		
DRAWN	DATE:	MATERIAL	ITEM DESCRIPTION			
PERNAK	03/02/2004		62-2			
CHK'D.	DATE:	VOLUME	ITEM ID			
Learmont	06/19/2007		62-2 B			
APP'D.	DATE:		SEE CHART			
KPC (KEY PRODUCT CHARACTERISTICS)  STPC (STANDARD PRODUCT CHARACTERISTICS)  PRODUCT MARKINGS 		NOTE: UNLESS OTHERWISE SPECIFIED TWO PLACE DECIMALS +/- .010 THREE PLACE DECIMALS +/- .005 ANGULARITY +/- 1°		UNITS INCH	SCALE: (UNLESS NOTED) FULL	REV. C