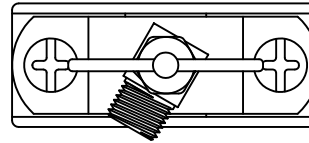
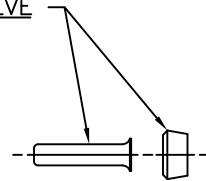


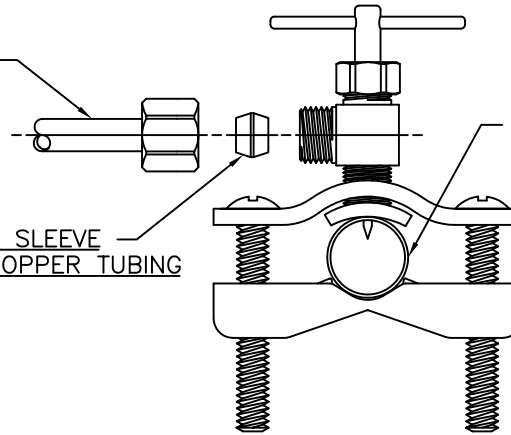
LET.	DATE	PER	BY	CHANGE
D	9/17/03	ROL	KAK	REVISED & UPDATED



BRASS INSERT AND PLASTIC SLEEVE  
FOR PLASTIC TUBING





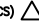


1/4" O.D. TUBING



CLAMP FITS 3/8"-1" TUBING

BRASS SLEEVE  
FOR COPPER TUBING

PNEV-NCV

 <b>BrassCraft</b> A Masco Company NOVI, MICHIGAN ALL GD&T PER ANSI STD Y14.5M CLASSIFICATION OF QUALITY LEVELS CLASS SYMBOL KPC (KEY PRODUCT CHARACTERISTICS)  STPC (STANDARD PRODUCT CHARACTERISTICS)  PRODUCT MARKINGS 	DESCRIPTION NEEDLE VALVE KIT SELF-PIERCING (SUBMITTAL)		DRAWING NO. VPA0091D			
	DRAWN KLIMKIE	DATE: 9/17/2003	MATERIAL	ITEM DESCRIPTION PNEV-NCV		
	CHK'D. Schutte	DATE: 09/17/2003	VOLUME	ITEM ID PNEV-NCV		
	APP'D.	DATE:				
NOTE: UNLESS OTHERWISE SPECIFIED TWO PLACE DECIMALS +/- .010 THREE PLACE DECIMALS +/- .005 ANGULARITY +/- 1°			 SIZE	UNITS INCH	SCALE: (UNLESS NOTED) FULL	REV. D

This drawing and all data contained herein is the confidential and exclusive property of BrassCraft Manufacturing, and shall not be disclosed to others without the written consent of BrassCraft. This drawing must be returned to BrassCraft if requested.