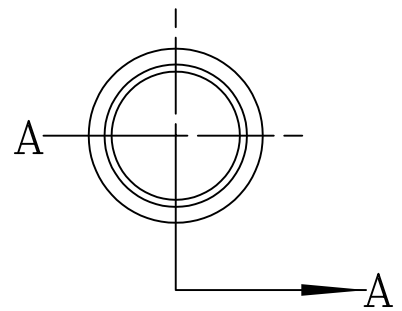
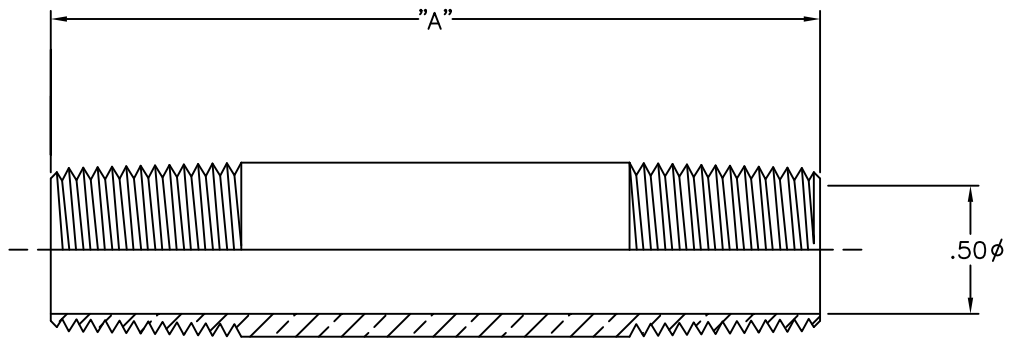




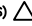


LET.	DATE	PER	BY	CHANGE
A	05/11/07	ROL	KAK	RELEASE



SECTION A-A

ITEM ID		ITEM DESC.	LENGTH 'A'
CHROME	ROUGH		
113-06-1.5-C	113-06-1.5-R	113-06-1.5	1.5"
113-06-2-C	113-06-2-R	113-06-2	2.0"
113-06-2.5-C	113-06-2.5-R	113-06-2.5	2.5"
113-06-3-C	113-06-3-R	113-06-3	3.0"
113-06-3.5-C	113-06-3.5-R	113-06-3.5	3.5"
113-06-4-C	113-06-4-R	113-06-4	4.0"
113-06-4.5-C	113-06-4.5-R	113-06-4.5	4.5"
113-06-5-C	113-06-5-R	113-06-5	5.0"
113-06-5.5-C	113-06-5.5-R	113-06-5.5	5.5"
113-06-6-C	113-06-6-R	113-06-6	6.0"

This drawing and all data contained herein is the confidential and exclusive property of BrassCraft Manufacturing, and shall not be disclosed to others without the written consent of BrassCraft. This drawing must be returned to BrassCraft if requested.

 A Masco Company NOVI, MICHIGAN ALL GDT PER ANSI STD Y14.5M CLASSIFICATION OF QUALITY LEVELS		DESCRIPTION 3/8 MIP PIPE NIPPLE (SUBMITTAL)		DRAWING NO. PFC0334A	
		DRAWN KLIMKIE 05/11/2007 CHK'D. Schutte 05/15/2007 APP'D.	DATE: 05/11/2007 DATE: 05/15/2007 DATE:	MATERIAL  VOLUME	ITEM DESCRIPTION 113-06-1.5 SEE CHART ITEM ID 113-06-1.5 C SEE CHART
KPC (KEY PRODUCT CHARACTERISTICS)  STPC (STANDARD PRODUCT CHARACTERISTICS)  PRODUCT MARKINGS 		NOTE: UNLESS OTHERWISE SPECIFIED TWO PLACE DECIMALS +/- .010 THREE PLACE DECIMALS +/- .005 ANGULARITY +/- 1°		 SIZE	