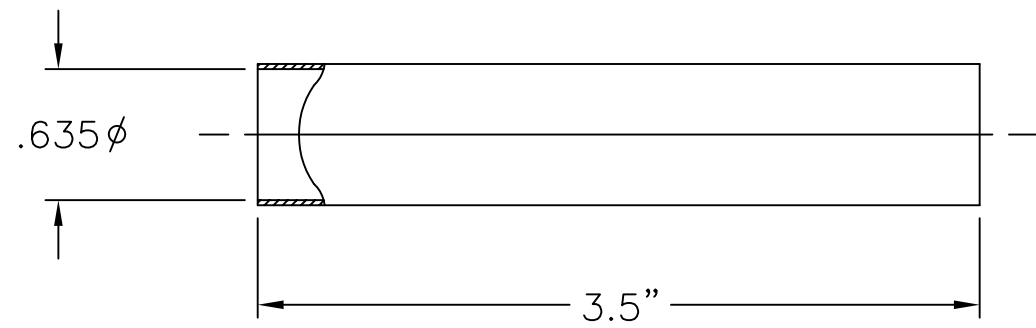



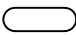



LET.	DATE	PER	BY	CHANGE
B	02/14/07	ROL	KAK	REVISED & UPDATED



ITEM ID	FINISH
8489 C	CHROME
8489 BSH	BISCUIT
8489 BZH	OIL RUBBED BRONZE
8489 NSH	SATIN NICKEL
8489 PH	POLISHED BRASS
8489 WH	WHITE

 A Masco Company NOVI, MICHIGAN ALL GDT PER ANSI STD Y14.5M CLASSIFICATION OF QUALITY LEVELS	DESCRIPTION		DRAWING NO.		
	1/2 NOM X 3 1/2" COVER TUBE (SUBMITTAL)		MPG0161B		
	DRAWN	DATE:	MATERIAL	ITEM DESCRIPTION	
	PERNAK	10/20/2005		8489	
CHK'D.	DATE:	VOLUME	ITEM ID		
Schutte	02/19/2007		8489 C		
APP'D.	DATE:		SEE CHART		
CLASS SYMBOL KPC (KEY PRODUCT CHARACTERISTICS)  STPC (STANDARD PRODUCT CHARACTERISTICS)  PRODUCT MARKINGS 	NOTE: UNLESS OTHERWISE SPECIFIED TWO PLACE DECIMALS +/- .010 THREE PLACE DECIMALS +/- .005 ANGULARITY +/- 1°	 SIZE	UNITS INCH	SCALE: (UNLESS NOTED) FULL	REV. B

This drawing and all data contained herein is the confidential and exclusive property of BrassCraft Manufacturing, and shall not be disclosed to others without the written consent of BrassCraft. This drawing must be returned to BrassCraft if requested.