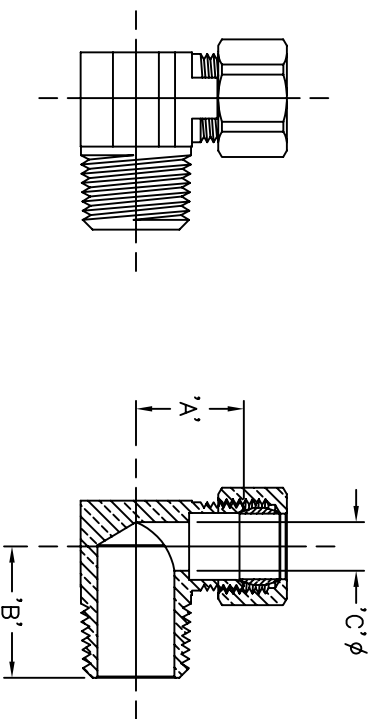



ITEM I.D. (BRASS)	ITEM I.D. (CHROME)	TUBE SIZE	PIPE THREAD	STRAIGHT THREAD	DIM 'A'	DIM 'B'	DIM 'C'
69-2-2 B	-	1/8	1/8	5/16-24	.600	.67	.094
69-3-2 B	-	3/16	1/8	3/8-24	.600	.69	.125
69-3-4 B	-	3/16	1/4	3/8-24	.590	.81	.125
69-4-2 B	-	1/4	1/8	7/16-24	.595	.69	.190
69-4-4 B	-	1/4	1/4	7/16-24	.620	.74	.190
69-4-6 B	-	1/4	3/8	7/16-24	.681	.94	.190
69-5-2 B	-	5/16	1/8	1/2-24	.660	.75	.250
69-5-4 B	-	5/16	1/4	1/2-24	.660	.81	.250
69-5-6 B	-	5/16	3/8	1/2-24	.750	.91	.250
69-5-8 B	-	5/16	1/2	1/2-24	.780	.93	.250
69-6-2 B	-	3/8	1/8	9/16-24	.628	.73	.218
69-6-4 B	69-6-4 C	3/8	1/4	9/16-24	.725	.84	.312
69-6-6 B	69-6-6 C	3/8	3/8	9/16-24	.719	.835	.323
69-6-8 B	69-6-8 C	3/8	1/2	9/16-24	.802	.96	.323
69-6-12 B	-	3/8	3/4	9/16-24	1.030	1.19	.310
69-7-4 B	-	7/16	1/4	5/8-24	.840	1.00	.310
69-7-6 B	-	7/16	3/8	5/8-24	.751	.87	.406
69-8-4 B	-	1/2	1/4	11/16-20	.880	.97	.410
69-8-6 B	69-8-6 C	1/2	3/8	11/16-20	.751	.87	.438
69-8-8 B	69-8-8 C	1/2	1/2	11/16-20	.834	1.02	.438
69-10-6 B	-	5/8	3/8	13/16-18	1.036	1.16	.406
69-10-8 B	69-10-8 C	5/8	1/2	13/16-18	1.061	1.29	.500
69-10-12 B	-	5/8	3/4	13/16-18	1.160	1.31	.500
69-12-12 B	-	3/4	3/4-14	1-18	1.187	1.375	.625
69-14-12 B	-	7/8	3/4-14	1-1/8-18	1.250	1.375	.750



This drawing and all data contained herein is the confidential and exclusive property of BrassCraft Manufacturing, and shall not be disclosed to others without the written consent of BrassCraft. This drawing must be returned to BrassCraft if requested.



**BrassCraft**  
A Masco Company

NOVI, MICHIGAN  
 ALL OUR PARTS SET TO ASSEMBLY  
 CLASSIFICATION OF QUALITY LEVELS  
 CLASS SYMBOL

---

DESCRIPTION: COMPRESSION X MHP ELBOW (SUBMITTAL)

DRAWING NO. CFED201C

DRAWN: PERNAK DATE: 07/08/2004

CHK'D: Kimkie DATE: 02/10/2005

MATERIAL: VOLUME: ITEM ID: 69-2-2

NOTE: UNLESS OTHERWISE SPECIFIED: TWO PLACE DECIMALS THREE PLACE DECIMALS

PRODUCT MARKINGS: STP(STANDARD PRODUCT CHARACTERISTICS) KFC(KEY PRODUCT CHARACTERISTICS)

UNITS: INCH SCALE: (UNLESS NOTED) FULL REV. C